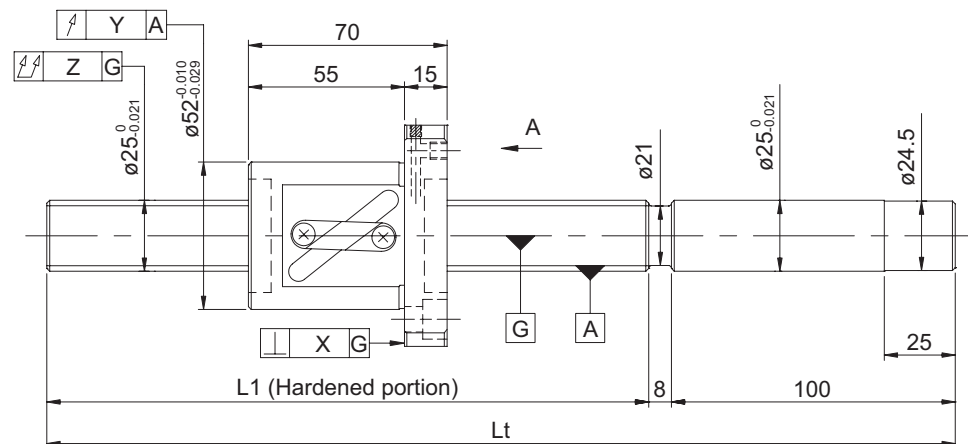
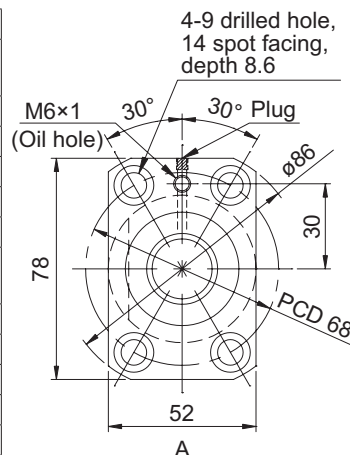


## GG series (Accuracy grade C5) / GE series (Accuracy grade C7)

## ● Ball screw specifications

Shaft diameter (mm) - Lead (mm)	25 - 20		
Number of circuits / Thread direction	1.5 turns 1 circuit / Right-hand		
Ball diameter (mm)	4.7625		
Root diameter (mm)	21.0		
Series	GG		GE
Basic dynamic load rating C (N)	10400		
Basic static load rating C0 (N)	20100		
Accuracy grade / Axial clearance symbol	C5 / S	C5 / F	C7 / M
Axial clearance (mm)	0	0.005 or less	0.030 or less
Preload torque (N·cm)	6.0 to 28.0	Up to 6.0	----
Spacer ball	None		
Recirculation system	Tube method		
Wiper	Lip seal		
Lubricant	Alvania Grease S2		



Model No. (Unfinished shaft ends)	Screw shaft length		Maximum stroke (L1 - nut length)	Lead accuracy		
	L1	Lt		$\pm E_c$	$e_c$	$e_{300}$
GG2520AS-BALR-1020A	912	1020	842	0.040	0.027	0.018
GG2520AS-BALR-1520A	1412	1520	1342	0.054	0.035	
GE2520AS-BALR-1020A	912	1020	842	0.05/300	----	----
GE2520AS-BALR-1520A	1412	1520	1342			

- Product with axial clearance of 0.005 or less (F) shown may be partially preloaded.
- Preload torque is a value before applying grease.

## Screw shaft diameter ø25, Lead 20

## ● Shaft end finish type

Standard precision ball screws are available with KURODA's recommended shaft end finish types for each size.

Other than KURODA's recommended shaft end finish types described below, additional machining including keyways, tapped holes, and D-cut processing are also available if requested. Please contact KURODA with your orders. Model examples for finished shaft ends are described below.

**Model example:** Unfinished shaft ends (See left figure) → Finished shaft ends

GG2520AS-BALR-1520A → GG2520AS-BALR-1520X1394-C5F

Thread length  
Overall screw shaft length

Supported end	Fixed end
Applicable supported end support unit	Applicable fixed end support unit
BUK-20S (Square type)	BUK-20, BUK-20F (Square type)
BUM-20S (Round type)	BUM-20, BUM-20F (Round type)

## ● Optional specifications

- Ball screw lubricating unit LUBSEAL can be equipped.

**Model example:** GG2520AS-BASR-1520X1394-C5F

Wiper material S: LUBSEAL

- Anticorrosive black coating (coating thickness: 1 to 2 μm) is available.

Accuracy of each part					Preload torque (N·cm)		Mass (kg)
X	Y	Z	U	V	Without clearance	With clearance	
0.013	0.019	0.100	0.013	0.005	6.0 to 28.0	Up to 4.0	4.71
		0.130				Up to 6.0	6.53
0.018	0.030	0.150	----	----	----	----	4.71
		0.190				----	6.53

- At the time of delivery, grease is inserted inside of the nut, with rust-preventive oil also applied. Before and during use, apply lubricant where appropriate.
- For models with lead accuracy grade of C3 or higher and unfinished shaft ends, consult KURODA.