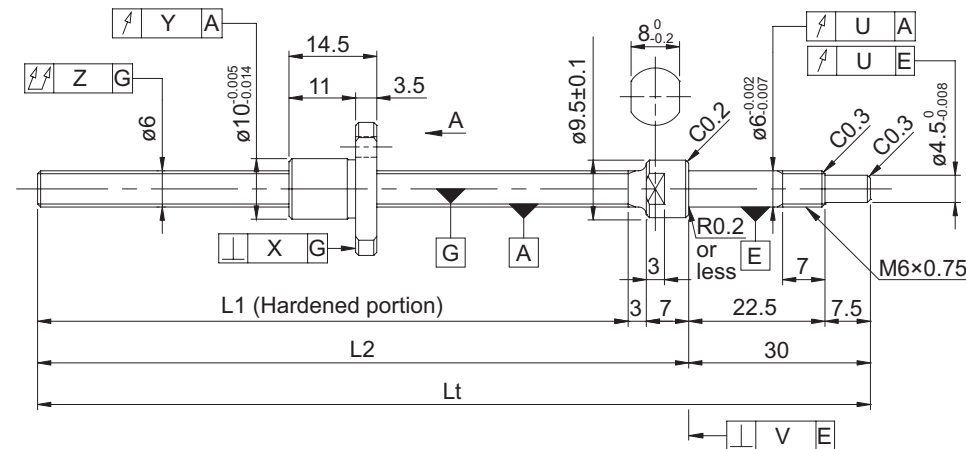
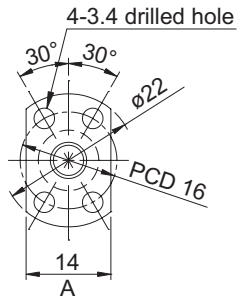


## DP series (Accuracy grade C3)

### • Ball screw specifications

Nominal diameter (mm) - Lead (mm)	6 - 1	
Number of circuits / Thread direction	1 turn 3 circuits / Right-hand	
Ball diameter (mm)	0.8	
Root diameter (mm)	5.3	
Series	DP	
Basic dynamic load rating C (N)	550	
Basic static load rating C <sub>0</sub> (N)	1150	
Accuracy grade / Axial clearance symbol	C3 / S	C3 / F
Axial clearance (mm)	0	0.005 or less
Preload torque (N·cm)	Up to 1.3	Up to 0.5
Spacer ball	None	
Recirculation system	Deflector method	
Wiper	None	
Lubricant	Multemp PS2	



Model No. (One shaft end finished)	Screw shaft length			Maximum stroke (L1 - nut length)	Lead accuracy		
	L1	L2	Lt		±E <sub>c</sub>	e <sub>c</sub>	e <sub>300</sub>
DP0601JS-HDNR-0130B-C3S	90	100	130	75	0.012	0.008	0.008
DP0601JS-HDNR-0130B-C3F							
DP0601JS-HDNR-0210B-C3S	170	180	210	155	0.012	0.008	0.008
DP0601JS-HDNR-0210B-C3F							

- Product with axial clearance of 0.005 or less (F) shown may be partially preloaded.
- Preload torque is a value before applying grease.
- At the time of delivery, grease is inserted inside of the nut, with rust-preventive oil also applied. Before and during use, apply lubricant where appropriate.

## Nominal diameter ø6, Lead 1

### • Shaft end finish type

Standard precision ball screws are available with KURODA's recommended shaft end finish types for each size. The fixed end type is finished beforehand.

Regarding the supported shaft end, KURODA's recommended shaft end finish types are not available. Regarding additional machining of the overall length, please contact KURODA with your orders.

**Model example:** Finished fixed end (See left figure) → Both shaft ends finished

DP0601JS-HDNR-0210B-C3F → DP0601JS-HDNR-0210X0170-C3F

→ Overall screw shaft length  
→ Thread length

Applicable supported end support unit	Applicable fixed end support unit
----	BUK-6 (Square type) See E-16
	BUM-6, BUM-6F (Round type) See E-20

### • Optional specifications

- Anticorrosive black coating (coating thickness: 1 to 2 μm) is available.

Accuracy of each part					Preload torque (N·cm)		Mass (kg)
X	Y	Z	U	V	Without clearance	With clearance	
0.008	0.008	0.025	0.008	0.0025	Up to 1.3	----	0.04
					----	Up to 0.5	
0.008	0.008	0.035	0.008	0.0025	Up to 1.3	----	0.05
					----	Up to 0.5	