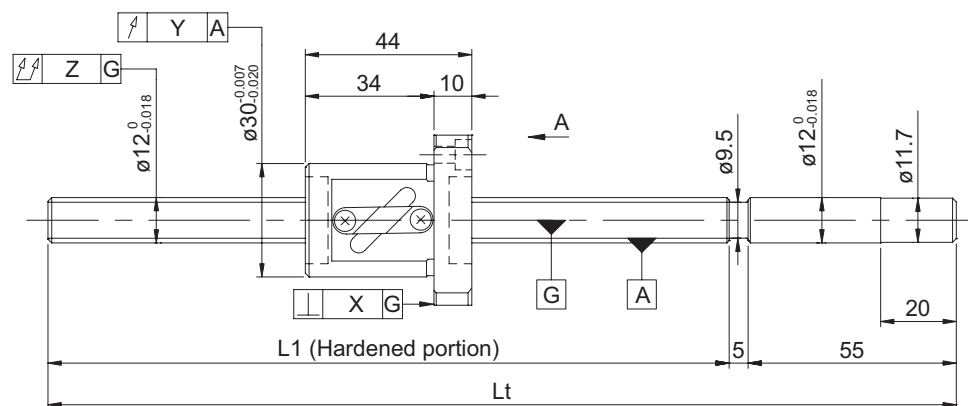
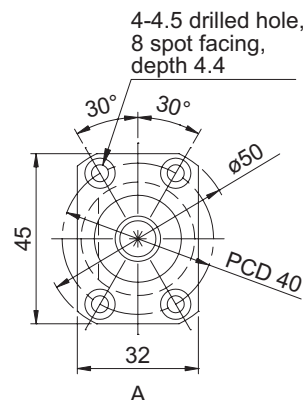


- **Ball screw specifications**

Shaft diameter (mm) - Lead (mm)	12 - 5		
Number of circuits / Thread direction	2.5 turns 1 circuit / Right-hand		
Ball diameter (mm)	3.175		
Root diameter (mm)	9.5		
Series	GG		GE
Basic dynamic load rating C (N)	5950		
Basic static load rating C0 (N)	9800		
Accuracy grade / Axial clearance symbol	C5 / S	C5 / F	C7 / M
Axial clearance (mm)	0	0.005 or less	0.030 or less
Preload torque (N·cm)	1.5 to 7.0	Up to 1.0	----
Spacer ball	None		
Recirculation system	Tube method		
Wiper	Lip seal		
Lubricant	Alvania Grease S2		



Model No. (Unfinished shaft ends)	Screw shaft length		Maximum stroke (L1 - nut length)	Lead accuracy		
	L1	Lt		±E _c	e _c	e ₃₀₀
GG1205DS-BALR-0305A	245	305	201	0.023	0.018	0.018
GG1205DS-BALR-0455A	395	455	351	0.025	0.020	
GE1205DS-BALR-0305A	245	305	201	0.05/300	----	----
GE1205DS-BALR-0455A	395	455	351			

- Product with axial clearance of 0.005 or less (F) shown may be partially preloaded.
- Preload torque is a value before applying grease.

Screw shaft diameter ø12, Lead 5

- **Shaft end finish type**

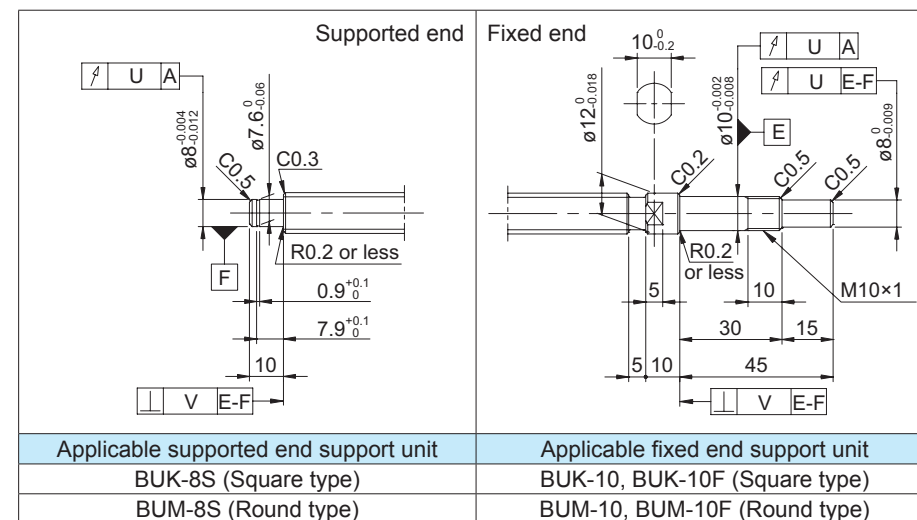
Standard precision ball screws are available with KURODA's recommended shaft end finish types for each size.

Other than KURODA's recommended shaft end finish types described below, additional machining including keyways, tapped holes, and D-cut processing are also available if requested. Please contact KURODA with your orders. Model examples for finished shaft ends are described below.

Model example: Unfinished shaft ends (See left figure) → Finished shaft ends

GG1205DS-BALR-0455A → GG1205DS-BALR-0455X0385-C5F

The diagram shows a horizontal line representing a screw shaft. A bracket above the line indicates the 'Thread length', which is the portion of the shaft with threads. A longer bracket below the line indicates the 'Overall screw shaft length', which includes the unthreaded portion at the end.



- **Optional specifications**

- Anticorrosive black coating (coating thickness: 1 to 2 μm) is available.

Accuracy of each part					Preload torque (N·cm)		Mass (kg)
X	Y	Z	U	V	Without clearance	With clearance	
0.010	0.012	0.055	0.011	0.005	1.5 to 7.0	Up to 1.0	0.44
		0.080					0.54
0.014	0.020	0.080	----	----	----	----	0.44
		0.120					0.54

- At the time of delivery, grease is inserted inside of the nut, with rust-preventive oil also applied. Before and during use, apply lubricant where appropriate.
- For models with lead accuracy grade of C3 or higher and unfinished shaft ends, consult KURODA.