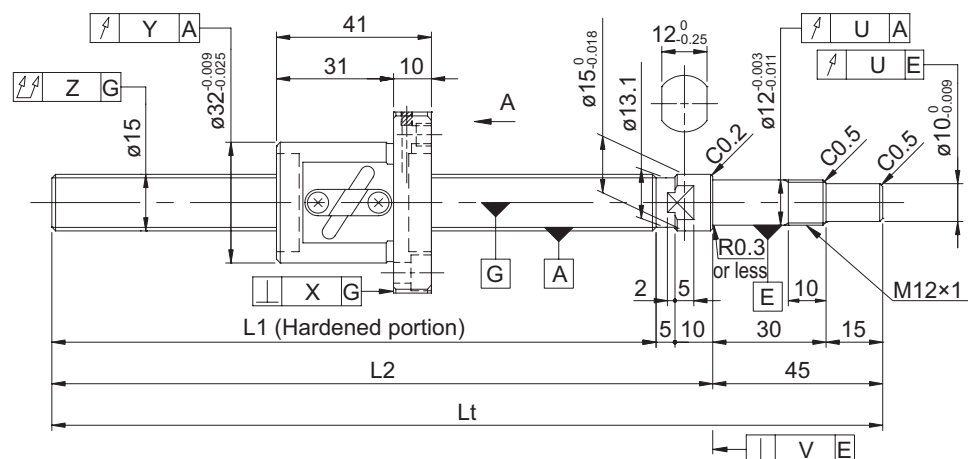
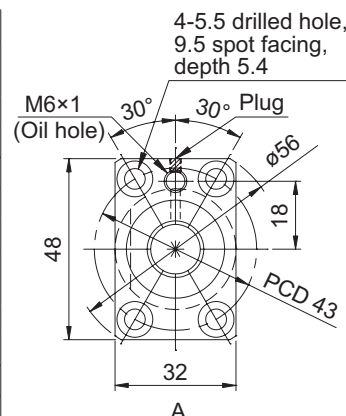


GP series (Accuracy grade C3)

- **Ball screw specifications**

| | | |
|---|----------------------------------|---------------|
| Shaft diameter (mm) - Lead (mm) | 15 - 4 | |
| Number of circuits / Thread direction | 2.5 turns 1 circuit / Right-hand | |
| Ball diameter (mm) | 2.3812 | |
| Root diameter (mm) | 13.1 | |
| Series | GP | |
| Basic dynamic load rating C (N) | 2580 | 4100 |
| Basic static load rating C0 (N) | 4270 | 8550 |
| Accuracy grade / Axial clearance symbol | C3 / S | C3 / F |
| Axial clearance (mm) | 0 | 0.005 or less |
| Preload torque (N·cm) | 1.0 to 5.0 | Up to 1.5 |
| Spacer ball | 1 : 1 | None |
| Recirculation system | Tube method | |
| Wiper | Lip seal | |
| Lubricant | Alvania Grease S2 | |

[illegible]

- Product with axial clearance of 0.005 or less (F) shown may be partially preloaded.
- Preload torque is a value before applying grease.
- At the time of delivery, grease is inserted inside of the nut, with rust-preventive oil also applied. Before and during use, apply lubricant where appropriate.

Screw shaft diameter ø15, Lead 4

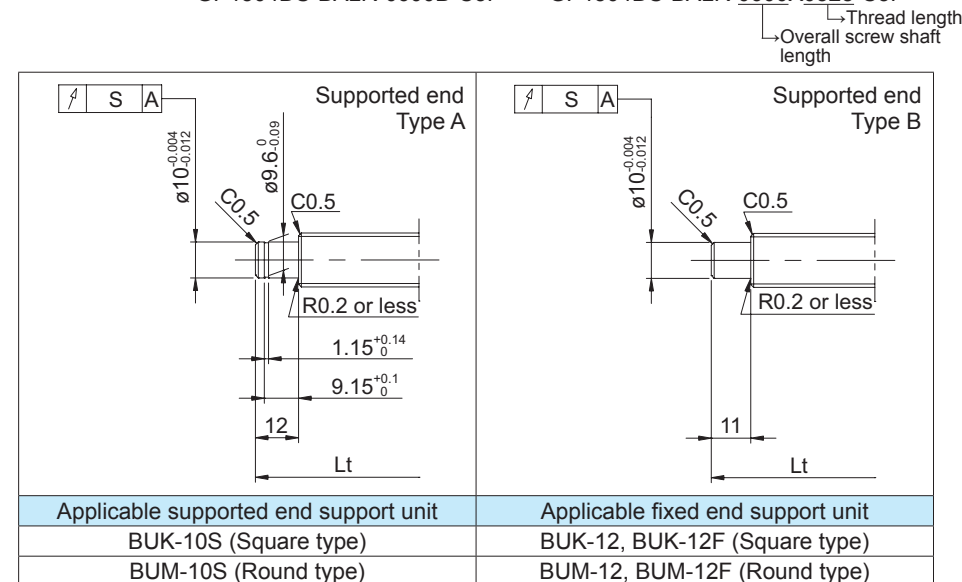
- **Shaft end finish type**

Standard precision ball screws are available with KUROMA's recommended shaft end finish types for each size. The fixed end type is finished beforehand.

Regarding the supported shaft end, additional machining to KURODA's recommended shaft end finish type described below is available. Please contact KURODA with your orders. Model examples for finished shaft ends are described below.

Model example: Finished fixed end (See left figure) → Both shaft ends finished

GP1504DS-BALR-0600B-C3F → GP1504DS-BALR-0600X0528-C3F



- **Optional specifications**

- Anticorrosive black coating (coating thickness: 1 to 2 μm) is available.

| Accuracy of each part | | | | | | Preload torque (N·cm) | | Mass (kg) |
|-----------------------|-------|-------|-------|-------|-------|-----------------------|----------------|-----------|
| X | Y | Z | S | U | V | Without clearance | With clearance | |
| 0.008 | 0.010 | 0.035 | 0.012 | 0.009 | 0.004 | 1.0 to 5.0 | ---- | 0.70 |
| | | | | | | ---- | Up to 1.5 | |
| 0.008 | 0.010 | 0.045 | 0.012 | 0.009 | 0.004 | 1.0 to 5.0 | ---- | 0.94 |
| | | | | | | ---- | Up to 1.5 | |