

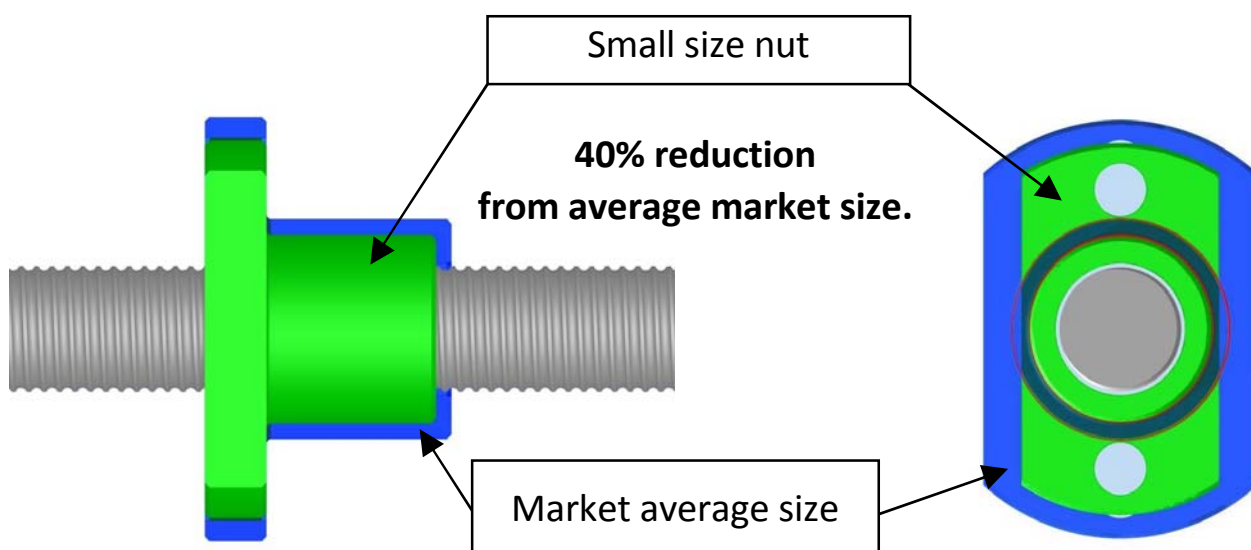
BALL SCREW

**Compact Deflector Ball Screw**

*Superior Cost Advantage  
&  
Compact Nut*



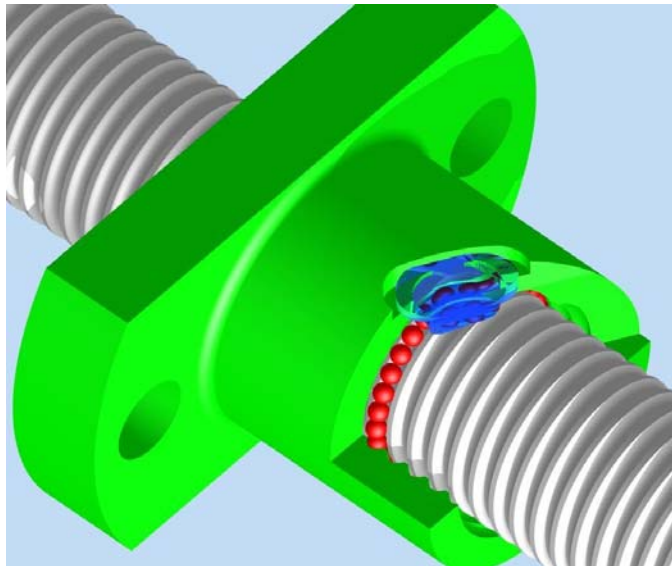
**Best suited for MEDICAL and ANALYSIS industries.**



**KURODA**  
PRECISION INDUSTRIES LTD.

239 SHIMOHIRAMA SAIWAI-KU, KAWASAKI, KANAGAWA 212-8560 JAPAN  
TEL:+81-44-555-3805 FAX : +81-44-555-1479 <http://www.kuroda-precision.com/>

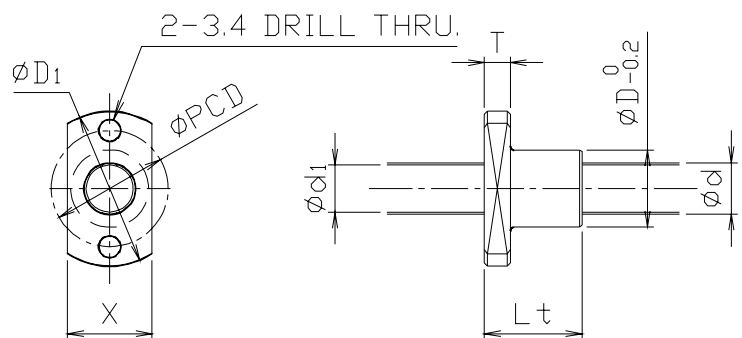
## ●INDUSTRY'S SMALLEST SIZE



Through an intensive research and development of ball circulation system with deflector method, the industry's smallest nut size and smother operation have been achieved.

## ●SPECIFICATIONS

Model number	Dynamic Load Rating [N]	Static Load Rating [N]
GT0601HS-HDNR	390	770
GT0801HS-HDNR	460	1,070



(Unit : mm)

Model Number	Diameter d	Lead L	Root Diameter d <sup>1</sup>	Number of Circuits	Nut Dimensions					
					D	Lt	T	D <sup>1</sup>	X	PCD
GT0601HS-HDNR	φ6	1	5.3	1×2	10	13	3.5	22	11	16
GT0801HS-HDNR	φ8	1	7.3	1×2	12	15	4	24	13	18

※ Ball screws are supplied with Multemp PS No.2 grease except for the special case.

※ For low dust-generating request or short stroke usage, please select Kuroda S grease recommended as follows.

## ●Recommended Grease

Kuroda S Grease

### •Main characteristics

- Low dust generation makes ball screws suitable for clean environment.
- High lubricating performance, good in torque characteristic in short stroke.

### •Model number

- S1-080G-J  
80g in bellows type container
- S1-400G-J  
400g in bellows type container

### •Property

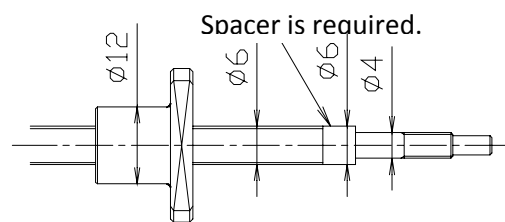
Appearance	Yellow White
Thickner	Urea
Base oil	Mineral Oil
Consistency	280 (No.2)
Operating temperature range	−20~+150°C



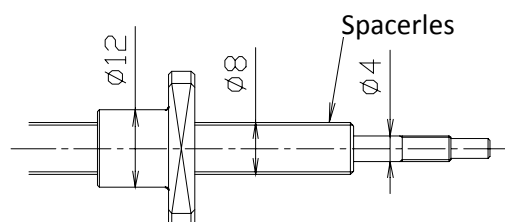
●For product improvement, the specifications and apperance specified in this material are subject to change without notice.

## ●SPACERLESS SHAFT-END IN 8mm

Conventional 12mm Dia. Nut with 6mm



New 12mm Dia. Nut with 8mm



New 12mm Dia. Nut with 8mm Dia. screw shaft realizes "Spaceless shaft end" for more accurate ball scew mounting.